

# Additional options price list

A guide to our professional products  
and services in your time of need





# Introduction

We believe that a funeral is a personal and meaningful occasion where you choose what happens. Whether you need to make the funeral arrangements for a loved one now, or would like to make funeral plans for the future, we hope you find these pages useful.

We don't expect you to make every decision about the funeral during the initial consultation. You may want to take a bit of time to consider some matters further, or consult with your family or other people. Please remember most arrangements can be changed at any time at your request, provided they have not already been completed. Should you wish to alter anything once you have looked through this brochure, please do contact us.

There is perhaps no other experience in life which can compare with losing a loved one and because we understand this, we ensure that our colleagues, business practices, premises and vehicles are all of the highest standard possible to support you and your family during, and after this difficult time.

*Please note the pictures within the brochure are for illustration purposes. Colours of products may vary to those shown. Due to volatile shipping, manufacturing and material costs, prices are subject to change and are correct as of 1 January 2024. Final prices will be agreed with you before any orders are confirmed/placed.*

## Contents

<b>Introduction</b>	<b>3</b>
<b>Additional products and services</b>	<b>4</b>
<b>Transport for the funeral service</b>	<b>6</b>
<b>Personalising the funeral service</b>	<b>20</b>
<b>Floral tributes</b>	<b>26</b>
<b>Cremated remains</b>	<b>29</b>
<b>Memorial jewellery</b>	<b>46</b>
<b>Ashes into sea</b>	<b>52</b>
<b>Ashes into space</b>	<b>53</b>
<b>Memorial ceremonies</b>	<b>55</b>
<b>Memorial headstones</b>	<b>56</b>
<b>Pre-paid bespoke funeral plan</b>	<b>58</b>
<b>Championing responsible business</b>	<b>60</b>
<b>Our burial grounds and crematoria</b>	<b>63</b>
<b>Bereavement support</b>	<b>66</b>
<b>Life Ledger</b>	<b>69</b>
<b>Coffins &amp; caskets</b>	<b>70</b>
<b>Standard attended funeral charges</b>	<b>92</b>
<b>Summary price guide</b>	<b>94</b>



# Additional products and services

## RECEPTION INTO A CHURCH OR A PRIVATE RESIDENCE

Bringing a loved one home or to a church reception that is not part of the main funeral service can be arranged at your request. These are carried out using a traditional hearse, with the provision of a conductor and uniformed pallbearers.

Monday – Friday 9am-5pm	£215
Monday – Friday after 5pm and before 9am	£320
Saturday	£320
Sunday and bank holidays	£425



## OUT OF HOURS FUNERAL SUPPLEMENT

Funerals can be completed outside of normal working hours, subject to local regulations.

<b>Monday – Friday</b> after 5pm and before 9am	<b>£320</b>
<b>Saturday</b>	<b>£320</b>
<b>Sunday and bank holidays</b>	<b>£425</b>

## EMBALMING

Choosing whether to see a person again after they have died is a very personal decision. Embalming can help restore a natural and restful appearance which can bring comfort when visiting a loved one in the reflection room.

<b>Embalming</b> (optional - up to 4 weeks)	<b>from £150</b>
<b>Embalming - long stay</b> (required if over 4 weeks)	<b>from £175</b>
<b>Embalming - repatriation</b> (compulsory)	<b>from £190</b>

## PACEMAKER/IMPLANTS

It will be necessary to remove a pacemaker or implant to enable a cremation to take place.

<b>Pacemaker/implants removal</b>	<b>from £75</b>
-----------------------------------	-----------------

*Please note this is not required for burial.*



## REMOVAL AND RE-FIXING A MEMORIAL

To enable a burial to take place, it may be necessary to remove and refix an existing memorial.

<b>Temporary grave marker</b>	<b>£70</b>
<b>Cremation tablet and vase</b>	<b>£170</b>
<b>Standard lawn type headstone NAMM fitted</b>	<b>£570</b>
<b>Kerb set (single only)</b>	<b>£835</b>

*Statues etc will be priced on application (after survey). Price above exclude new foundations and sub-bases.*

# Transport for the funeral service

The final journey can be an emotional and poignant part of the service and often families look to personalise this by selecting a vehicle to reflect the life and passions of their loved one. From a traditional hearse, a majestic horse drawn carriage through to a motorcycle, we have a wide range of transport options available to help you create a unique and fitting tribute. All prices include all necessary personnel to conduct the funeral.

## HORSE DRAWN HEARSE



A cortège led by a horse drawn hearse creates an air of opulence, along with traditional style and elegance. We can provide a selection of black or white horses with a beautiful glass-sided hearse. Mourning coaches are also available and come in a choice of black or white.



### Black glass-sided hearse

1. Pair of horses	£1,600
2. Pair of horses with an outrider	£2,050
3. Team of horses (4)	£2,300

## White glass-sided hearse

1. Pair of horses	£1,600
2. Pair of horses with an outrider	£2,050
3. Team of horses (4)	£2,300



## Mourning coach



Black mourning coach with pair of horses £1,230

White mourning coach with pair of horses £1,230



*In some instances - subject to terrain and distance, a minimum of four horses may be required or for the horses to complete the final part of the journey only. This will be confirmed by your funeral consultant in advance.*

# Transport for the funeral service

## VINTAGE LORRY HEARSE

---

**1929 Guy Lorry**  
**£1,995**

The classic 1929 Guy Lorry provides a unique and dignified means of transportation for your loved one on their special journey. A great choice for those who worked in the transport or trade industries or for someone who simply enjoyed vintage transport.



## VINTAGE HEARSE

---



**Ford Escort Mark 1**  
**£1,545**

Manufactured in 1973 the Ford Escort was one of the iconic classic cars produced in the 70's. Ideal for someone who loved Fords or classic cars of the 70's era.



## MOTORCYCLE HEARSE

A distinctive means of transport, popular with motorcycle enthusiasts as well as those who wish to have a different type of funeral. We offer a range of motorcycle hearses from the classic style Triumph through to the iconic Harley Davidson.

Each vehicle has a pillion seat and wreath rail. We will also provide an appropriately dressed professional rider to take your loved one on their final journey.

### Motorcycle with sidecar hearse

1. Triumph motorcycle	£1,780
2. Hayabusa motorcycle	£1,780
3. Harley Davidson motorcycle	£1,855



# Transport for the funeral service

## DOUBLE DECKER HEARSE

1965 Routemaster bus

POA

An original London Transport 1965 Routemaster long wheelbase red bus, this vehicle had the fleet number RML2262, and was in service on the routes 14 and 22.

The Routemaster can take up to 72 passengers without a coffin and 40 passengers with a coffin in place, giving family and friends the opportunity to travel with their loved one to the final resting place.



## ONLY FOOLS AND HEARSES™



### Trailer hearse £1,500

An iconic funeral hearse for any Only Fools and Horses fan, this replica of Trotters Independent Traders Van will ensure a unique send off for your loved one.



# Transport for the funeral service

## ROLLS ROYCE HEARSES

**1974 Rolls Royce Phantom** **£2,030**

An icon of its generation the 1974 Rolls Royce Phantom, fully restored and converted. Finished in traditional masons black with chrome plated bumpers.



**1936 Rolls Royce 20/25** **£2,030**

This is a pristine example of a 1936 Rolls Royce 20/25. A truly unique car available to make your loved ones journey extra special.



**1933 Austin 16 Hearse** **£2,030**

This 1933 Austin 16 hearse, originally from Ireland has been restored back to its original condition.

*Please note due to the size of the coffin compartment, this hearse can only accomodate certain coffin sizes.*



Rolls Royce Phantom VII 4 seater limousine

£1,730



Rolls Royce Phantom VII hearse £2,995

The new stylish Rolls Royce Phantom design is finished in silver with custom black fine lines hand painted to the exterior. The front interior is finished in black leather with piano black veneers and matching black carpets, whilst the illuminated coffin compartment is ornamented with crystal glass and polished stainless steel.

*Please note floral tributes cannot be displayed around the coffin due to the lowered deck arrangement.*

# Transport for the funeral service

## VOLKSWAGEN CAMPER VAN HEARSE



The beautiful white and silver classic Volkswagen Camper Vans are an alternative retro funeral hearse. Popular with VW enthusiasts or those looking for a more informal type of vehicle. The hearses can be decorated with personal tributes to reflect the personality and interests of your loved one.



1965 VW splitscreen hearse

POA

Originally a deluxe splitscreen microbus from the USA, this VW in two-tone silver has been sympathetically restored to a fully functional hearse.

1972 VW bay window hearse

POA



## LAND ROVER HEARSE



### Land Rover hearse

£1,490

Keeping as much of the original specifications of the 110 as possible - the Land Rover hearse is one of a kind.

Sporting the Carpathian Grey colour with a walnut veneer deck fitted professionally by Land Rover coach builders - this hearse is a unique way to transport a loved one to their final resting place.





*Southern Co-op electric and hybrid vehicles collection*



# Transport for the funeral service



## WISPER TESLA FULLY-ELECTRIC HEARSE

Safe, clean, stylish: the new all-electric hearse, based on the Tesla Model S2, puts innovation on the road.

Wisper Tesla fully-electric hearse

£895

Experience progress every metre of the way. Safe, clean, stylish, the Wisper, based on the fully-electric ultra low emissions Tesla Model S, puts innovation on the road. With state-of-the-art technology and equipment, the Wisper hearse makes a very clear statement: the future drives electric. The colour of the Wisper hearse is tenorite grey.



# Transport for the funeral service

## TRADITIONAL HEARSE



All of our hearses are built by specialist coach-builders. They are of the highest quality and are specifically designed for use within the funeral profession.

Prices include all necessary personnel to conduct the funeral for up to three hours (from leaving our funeral home to returning) and includes up to 50 running miles.



<b>Traditional hearse</b>	<b>£625</b>
<b>Additional hearse or floral hearse</b>	<b>£330</b>
<b>Additional mileage charge (beyond 50 miles)</b>	<b>£1.95 per mile</b>
<b>Additional waiting time charge (over 3 hours)</b>	<b>£35 per 30 minutes per vehicle</b>

*Please note colours and models may vary from the pictures shown.*



## LIMOUSINES

All of our limousines are coach-built to the highest specification to ensure client comfort. Prices include all necessary personnel to conduct the funeral for up to three hours (from leaving our funeral home to returning) and includes up to 50 running miles. Each limousine can carry six passengers in the rear of the vehicle.

For children wishing to travel in our vehicles, parents/guardians must provide and fit their own child car seats\*. We are unable to allow children to travel without a child car seat and cannot accept responsibility for their installation.

*\*Children under 12 years old or under 135 cm tall, are required by UK law to use a child car seat.*



<b>Limousine (each)</b>	<b>£225</b>
<b>Additional mileage charge (beyond 50 miles)</b>	<b>£1.95 per mile</b>
<b>Additional waiting time charge (over 3 hours)</b>	<b>£35 per 30 minutes per vehicle</b>

*Please note colours and models may vary from the pictures shown.*

# Personalising the funeral service

There are many different ways a funeral can celebrate the individuality of the person who has died. We have a wide range of options to help you personalise the service in a unique and fitting way.

## MUSIC FOR THE FUNERAL SERVICE



Many local crematoria have a media library system where you can select your personal choice of music to use during the service. Music does not have to be limited to classical pieces or a hymn. Favourite pop songs, musicals and even music recorded by a family member can personalise the funeral service.

With enough notice, we are able to arrange musicians and/or a choir for the funeral service. Some examples include bagpipes or a bugler.

*Please ask us for details of cost and availability.*



## REMEMBRANCE VIDEO

For family members or friends who are unable to attend the funeral, or for you to keep as a memory of a poignant day, we can arrange for the funeral to be recorded on DVD/USB drive/stick.

Our professional videographers are able to discreetly capture all elements of the funeral, from the flowers to the cortège, in a sensitive and considerate manner, ensuring that everything is captured for you to reflect on at a later date.

Includes attendance time at one service venue (church/crematorium/natural burial ground etc) for up to 90 minutes and all post-production and editing.

*Please note the permission of the officiant and the venue will need to be obtained in advance.*



Remembrance video

POA

## WEB CASTING

It is possible at certain venues to transmit live chapel proceedings, privately and securely over the internet to invited guests. Using the latest network technologies, a virtual environment is provided in which absent family and friends can view the service from anywhere in the world.

*Please ask us for details of cost and availability.*



Venue specific

POA

# Personalising the funeral service

## RELEASING OF DOVES

A white dove release at a funeral or the placing of a memorial, can be a peaceful and healing tribute, helping bring closure to family members of a lost loved one, and allowing them to say goodbye.

*This service is only available at permitted venues. Speak to your Funeral Consultant to find out more.*

**A single dove** **£185**

*Represents: the spirit and soul of the departed being released to begin their final journey.*

**A pair of doves** **£195**

*Represents: the joining of two souls.*

**Three doves** **£205**

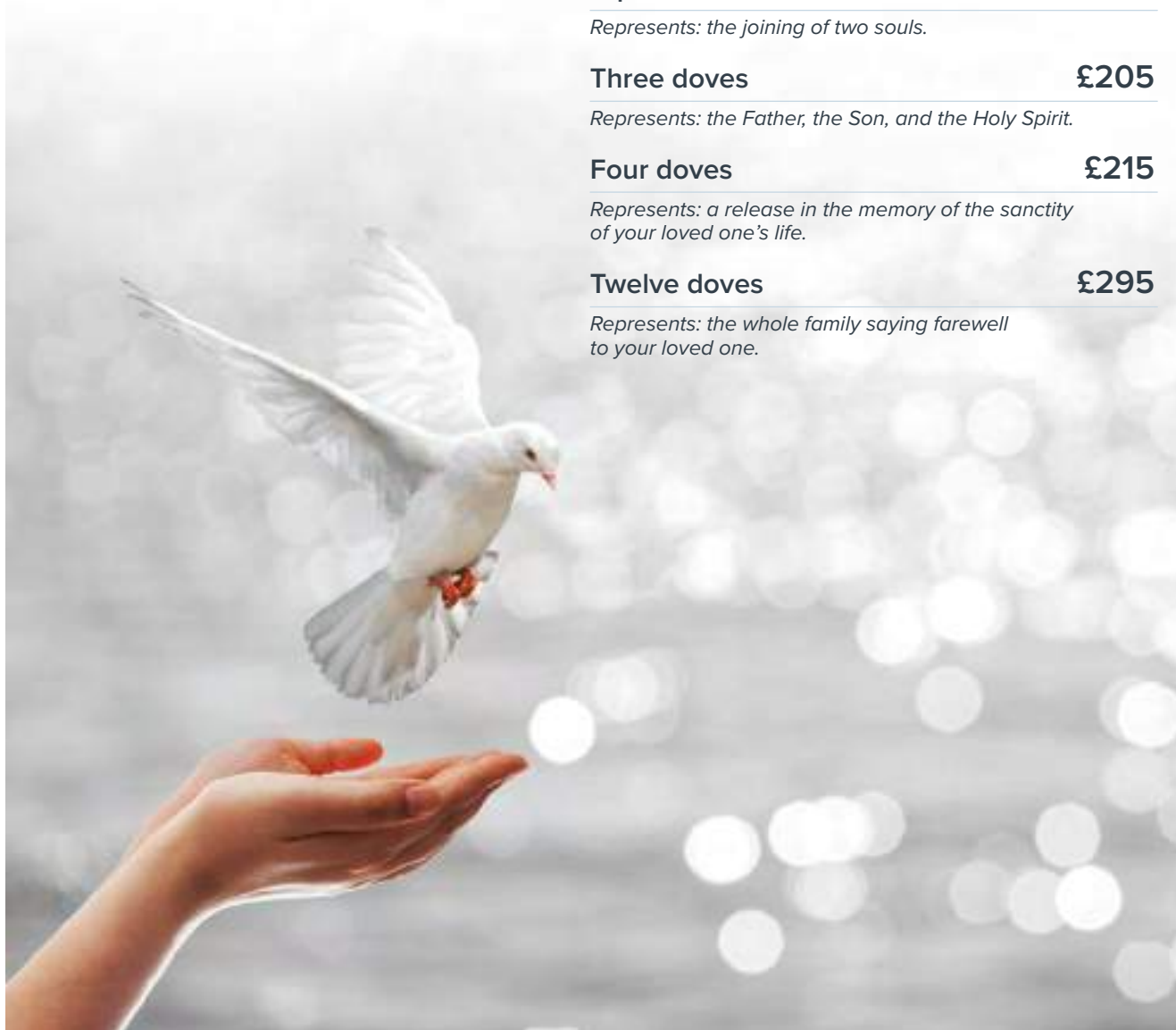
*Represents: the Father, the Son, and the Holy Spirit.*

**Four doves** **£215**

*Represents: a release in the memory of the sanctity of your loved one's life.*

**Twelve doves** **£295**

*Represents: the whole family saying farewell to your loved one.*





## ONLINE TRIBUTES AND DONATIONS

During the funeral consultation, we will set up a personal tribute page for you. Our online tribute service helps you to remember and celebrate a loved one's life, to share their memories, stories, photos and videos, light virtual candles in remembrance as well as publish details of the funeral service for everyone to view. Friends, family and guests can also donate online to your chosen charity or charities through this service.

To find out more about this service, please speak to your funeral consultant and visit our website.

**This service is included in our professional services, at no extra cost.**

## BENEFITS OF AN ONLINE TRIBUTE PAGE

- Friendly and easy to use service where you have complete control over the content
- A funeral notice is published to inform guests about the funeral details, saving you time and energy
- Easy to use on a tablet or mobile device so you can upload a comment at any time of day or night, anywhere
- Online donations can be made to any charity or multiple charities, no matter how small, with the option to apply for gift aid
- Allows you to stay in touch with others, helping you through the grieving process
- The personal tribute will last forever and you can help your loved one's memory live on for future generations

# Personalising the funeral service

High quality, beautifully printed personalised service stationery and more.

## Orders of Service - pack of 20 from £90

*(includes 5 photos and up to 16 pages)*

Orders of Service can be particularly useful, guiding the congregation through the service, show words to any hymns, music or prayers and, perhaps most importantly, provide a lasting keepsake for those who attend.



## Other stationery from £30

Bookmarks, attendance cards, memorial cards and books of condolence all available in many designs, or create your own bespoke design.

*Please note products shown are not to scale.*



## In Memory Pins - pack of 10 from £21

*(with Order of Service)*



Silver Heart



Silver Dove



Angel Wings



Red Robin



Forget-Me-Not



Rainbow Heart



Pink Rose



Eternity Sign



Shamrock



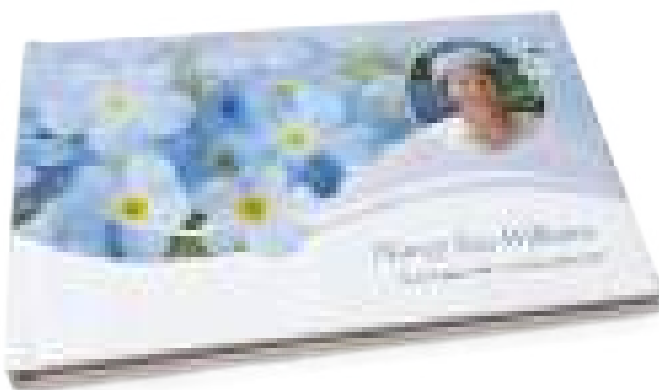
Sport Boots



White Butterfly



Teddy Bear





## GROW A MEMORY...

Personalised funeral seed favours, the perfect sentimental touch to an important and emotional occasion.

**In Memory Seeds - pack of 10** from **£21**

*(with Order of Service)*



*Forget-Me-Not seeds*

*Poppy seeds*

*Sunflower seeds*



*Wildflower seeds*

*Daisy seeds*

*Pansy seeds*



*All In Memory Seeds available in Kraft card and white card style with or without photo*

**Forever By Your Side photos - pack of 2**  
from **£26**

*(with Order of Service)*

A heartfelt collection of 10 treasured photographs, concertina folded and protected with a soft edged cover.

*6" x 4" Size - 10 photos*



FOREVER  
*by your side*<sup>®</sup>  
x



*Polaroid Size - 10 photos*

**ASK FOR OUR FULL BROCHURE**

# Floral tributes

When it is difficult to find the right words, floral tributes can express feelings in a very unique way. Our collection of beautiful flowers can help you create a personal and fitting tribute to your loved one.

*As a regional co-operative society, we pride ourselves on supporting local florists across our region. The below sizes are indicative, and pricing may vary from florist to florist and seasonality. Speak to your funeral consultant for an accurate personalised quote.*

## Contemporary heart

50 x 50 cm

This heart-shaped design including large-headed roses, carnations and cymbidium and dendrobium orchids is given a contemporary feel with sweeping pink calla lilies, cornus and steel grass.



## Seasonal posy pad

20 x 30 cm

A modern arrangement of seasonal flowers and vibrant shades. The compact design is ideal where space is limited or when a smaller tribute is required.

## Wreath

38 x 38 cm

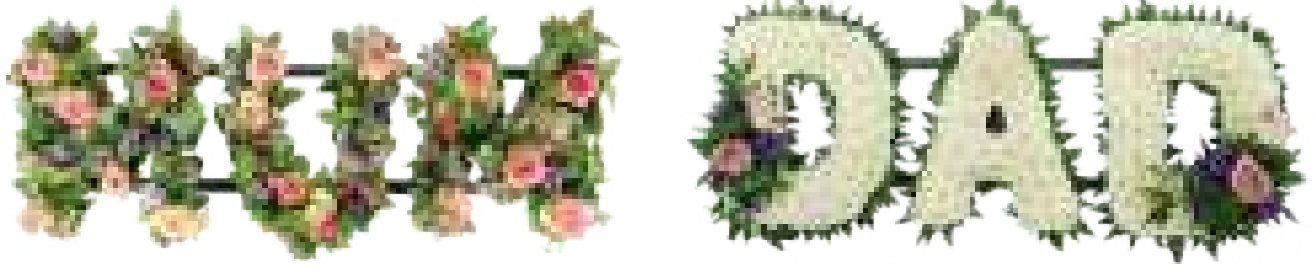
Representing the circle of life, this modern take on a traditional design uses roses, germini and spray roses.



## Teardrop

60 x 30 cm

A collection of seasonal flowers in soft pastel shades, creating a classic teardrop design.



### Name tribute - double spray

*25 x 20 cm per letter*

An array of delicate white double spray chrysanthemums, edged with foliage and seasonal posies to create a very personal tribute.

*Please note all letters are available.*



### Red rose coffin spray

*120 x 45 cm*

The classical rose coffin spray is both elegant and traditional using your loved one's favourite coloured rose.

### Cream and white coffin spray

*120 x 45 cm*

This timeless classic casket design is created with seasonal flowers, soft and flowing, a delicate tribute in any colour.

**ASK FOR OUR FULL BROCHURE**



*Hinton Park Woodland Burial Ground*

# Cremated remains

We have a wide range of caskets, urns and keepsakes available for your loved one's cremated remains. Available in different materials, colours and styles to allow the utmost choice and personalisation.

The final resting place of cremated remains is an important decision and one that you should think about with great care ensuring full consideration is given to all options available. Once your decision has been made and acted upon, it is unlikely that you will then be able to change your mind.

Sizes stated are approximate and to be used as a guide, but are not definitive. Cremated remains volumes will vary from person to person.

## FOR BURIAL

For many, the ideal way to say farewell to a loved one is to bury their cremated remains, and this requires a form of casket.

### Traditional caskets

These elegant, solid wood caskets are designed for burial within a churchyard or cemetery. The highly polished finish is complemented with a pair of miniature ring handles and an inscribed nameplate.

*Colours of these caskets may vary to those shown. Sizes stated are approximate. Volume based on average adult ashes set = 3.5 litres.*



**Sea casket**  
**£115**

*33 x 18 x 19 cm  
Holds a full set of cremated remains.*



**Single casket mahogany**    **£115**

**Single casket oak**    **£115**

*29.5 x 21.5 x 16 cm*

*Holds a full set of cremated remains.*

**Double casket**    **£130**

*36 x 28 x 18 cm*

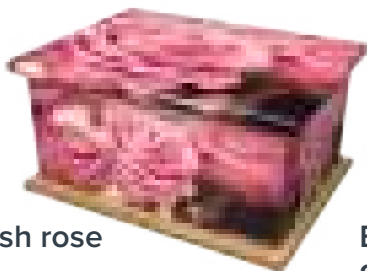
*Holds 2 sets of cremated remains.*



### Themed picture caskets

Reflect your loved one's life through a personalised themed casket. A full bespoke design service is available and can include family photographs, drawings or hobbies.

*All caskets 30 x 23 x 10 cm. Each holds a full set of cremated remains.*



**English rose**  
**£180**



**British flag**  
**£180**



**Bespoke**  
**from £180**

**ASK FOR OUR FULL BROCHURE**

# Cremated remains

## ECO CASKET COLLECTION

Our environmentally friendly eco casket range for cremated remains are hand crafted in natural and biodegradable materials, suitable for burial, scattering or personal keepsake.

### Willow woven caskets

Hand woven caskets, using the highest quality English willow and cotton drawstring lining and includes engraved name plate. Personalise the casket band at no extra cost. For band and casket colours options see page 81.

*Please note images are not to scale. **Sizes and capacities stated are approximate.** Average adult ashes set is 3.5 litres.*



1

£150



2

£155



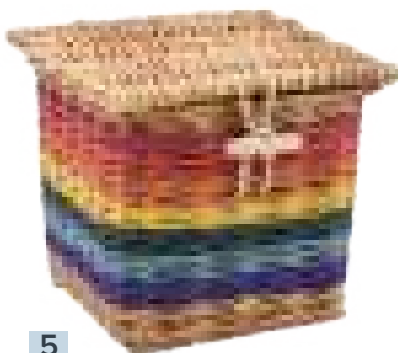
4

£155



3

£175



5

£165



6

£165

1. Holds 4 litres
2. Holds 6 litres
3. Holds 8 litres
4. Holds 3.5 litres
5. Rainbow Ashes Casket - any shape single casket
6. Painted Ashes Casket - any shape single casket

## Woven caskets

Hand woven caskets, using the highest quality natural drawstring lining. Includes name plate.



7 £140

8 £140



7. Daisy Banana Leaf Ashes casket Holds 5.8 litres

8. Oasis Sea Grass casket. Holds 4.6 litres

9. Water Hyacinth Ashes casket. Holds 5.8 litres

10. Daisy Bamboo casket. Holds 4.6 litres

10 £140



9 £140



### Natural woollen caskets natural £145 / limestone £155

30 x 24 x 18 cm. Holds 5 litres of cremated remains.

Carefully hand stitched using pure new British wool and supported on a strong recycled cardboard frame. The natural woollen caskets are personalised with an embroidered name plate.

**Colours of these caskets may vary to those shown.**



# Cremated remains

## GARDEN COLLECTION



This unique collection of memorial orbs and urns for cremated remains are ideally suited for private locations and garden areas.

### Stone memorial orbs

from £745

*Various sizes. Holds 1-4 sets of cremated remains.*

Using natural Cumbrian limestone, the stone memorial orbs are designed to weather and age to create the established look of natural stones.

The stone memorial orbs can hold from one to four sets of cremated remains. The cremated remains are placed into a special steel casket which is then placed within the orb. The smallest stone orb is used for memorial inscription only. Each orb comes with a granite memorial plaque to which a gold leaf inscription (charged seperatley) can be added for your personal tributes.



### Ornamental stone memorial orbs

from £245

Nature themed memorials in a choice of elegant designs can be inscribed and used as an individual remembrance memorial, or for complementing an existing stone or woodland orb.





### Woodland memorial orbs from £830

*Various sizes. Holds 1-4 sets of cremated remains.*

Crafted from sustainable woodland timber and sourced from natural windfall in woodland locations nationwide, each orb is unique, providing an original memorial.

As the orb becomes established within the garden it will become home to mosses and insects, contributing to the wildlife and health of the environment.

The woodland memorial orbs can hold from one to four sets of cremated remains. The cremated remains are placed into a special steel casket which is then placed within the orb. Each orb comes with a granite memorial plaque to which a gold leaf inscription (charged separately) can be added for your personal tributes.



### Buddha

£345

*25 x 30 x 50 cm. Holds a full set of cremated remains.*

The Buddha is hand carved in stone and perfect for a quiet spot in the garden, with the ashes stored discreetly in the base. With an overall height of 50cm, the portable Buddha will discolour over time in external conditions, adding to its rustic charm.



### Highdown urns £230

*18 x 15 x 27 cm. Holds a full set of cremated remains.*



A stylish granite-effect urn which is equally at home indoors or outdoors. This innovative urn is weather-resistant, so can be positioned on a patio or garden or may be buried. With its unique adjustable plaque holder, an urn that has been buried can be retrieved easily and moved to a new location at any time.

The height of the marker post is easy to adjust and the memorial plaque can be securely fixed in a horizontal or vertical orientation. The price includes the urn, marker post and engraving.



# Cremated remains

## MEMORY BENCH

The Memory Bench is a special way to remember a loved one, standing as a reminder of the life lost in a very special place. It provides family and friends with the opportunity to go to reflect on their special memories and moments shared.



4ft x 2ft x 3ft **£495**

5ft x 2ft x 3ft **£565**

6ft x 2ft x 3ft **£590**

7ft x 2ft x 3ft **£675**

Fully assembled and engraved **£115**

*Holds a token amount of cremated remains.*

Expertly constructed to the highest spec, using the very finest grade-A teak, this Memory bench offers a fine sanded smooth finish. It is supplied flat packed with assembling instructions. The bench can be engraved (and therefore fully assembled - charged separately) with a personal message or icon, as well as coming with a unique memorial tube which can hold a small keepsake such as a small note, picture or small segment of ashes.





*Mayfields Woodland Burial Ground*

# Cremated remains

## TO KEEP AT HOME AND TREASURE

For many of us, keeping a loved one's cremated remains at home can be very comforting. We have a selection of decorative urns in ceramic, brass or fibreglass that can be displayed openly or kept in a private place of remembrance.

Available in different sizes to hold either one or two sets of cremated remains or a miniature keepsake urn to hold a smaller amount. The keepsake urns are ideal for several family members and friends wanting to share a lasting memory.

*Please note images are not to scale. **Sizes and capacities stated are approximate.** Average adult ashes set is 3.5 litres.*

### Urns and keepsakes from £69



1

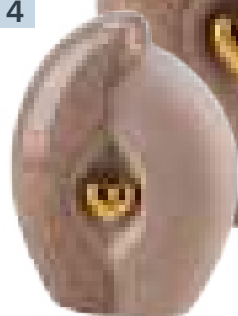


2

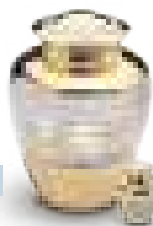
3



4



5



6



7



8

9



12



10



11



1. H 31cm. Holds 3.6 litres.
2. H 16cm. Holds 0.4 litres.
3. H 29cm. Holds 3.8 litres.
4. H 17cm. Holds 0.8 litres.
5. H 23cm. Holds 3.2 litres.
6. H 7cm. Holds a small amount of cremated remains.
7. H 14cm. Holds 0.7 litres.
8. H 30cm. Holds 3.8 litres.
9. H 39cm. Holds 3 litres.
10. H 26cm. Holds 3.7 litres.
11. H 26cm. Holds 3.7 litres.
12. H 35cm. Holds 3.5 litres. (Colour may vary due to natural materials used)

ASK FOR OUR FULL BROCHURE

**Candle holders**  
from £99



13



14



15

**Keepsakes**  
from £69



16

17



26



18



23



24



21

20



22



27

28

29



19



25

- 13. H 15cm. Holds 0.4 litres.
- 14. H 11cm. Holds 0.5 litres.
- 15. H 12cm. Holds 0.7 litres.
- 16. H 23cm. Holds 3.2 litres.
- 17. H 7cm. Holds 0.1 litres.
- 18. H 15cm. Holds 0.4 litres.
- 19. H 7cm. Holds 0.8 litres.
- 20. H 7cm. Holds 0.3 litres.
- 21. H 15cm. Holds 3 litres.
- 22. H 4cm. Holds a small amount of cremated remains.
- 23. H 26cm. Holds 3.2 litres.
- 24. H 7cm. Holds a small amount of cremated remains.
- 25. H 7cm. Holds 0.8 litres.
- 26. H 15cm. Holds 0.4 litres.
- 27. H 28cm. Holds 3.3 litres.
- 28. H 17cm. Holds 0.7 litres.
- 29. H 9cm. Holds a small amount of cremated remains.

# Cremated remains

## PERSONAL KEEPSAKES

Keepsakes are a way to create special memorials of a loved one with tangible and personalised mementos.

All of these beautiful products have been designed to retain a small amount of cremated remains of your loved one in a safe, personal and discreet manner.

*actual size*



### Tribute oak heart keepsake £60

*6.5 x 6.5 cm. Holds a small amount of cremated remains.*

Beautifully carved from natural oak, these heart keepsakes are the perfect size to hold in the palm of your hand and are designed to discreetly hold a tiny quantity of cremated remains, along with photos, jewellery and other small mementos.

Please note cost is inclusive of up to seven engraved letters.

### Heart shaped keepsakes from £59

*6cm x 6cm. Holds a small amount of cremated remains.*

Treasure your loved one's memory with an elegant heart shaped ceramic keepsake. Inside each of these hand-crafted hearts is a hidden chamber that will hold and protect a small amount of cremated remains of your loved one.



*actual size*

**Memory bear****£60***43cm. Holds a small amount of cremated remains.*

The Memory Bear huggable plush teddy bear keepsake urn keeps precious memories safe in a specially-designed zipped compartment suitable for storing ashes, or other much-loved keepsakes.

The Memory Bear can be personalised by adding a ribbon with the message of your choice, in blue, pink or white.



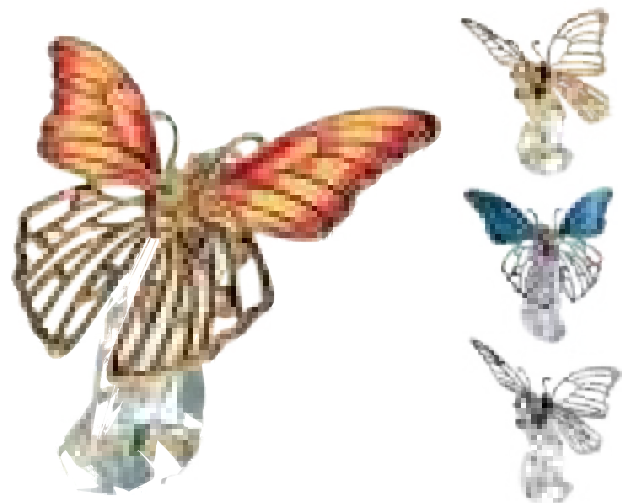
Beautiful crystal memorial keepsakes, to keep and treasure forever.

**Crystal heart****from £70***6 x 6 cm. Holds a small amount of cremated remains.*

This memorial keepsake is the perfect memorial gift to hold the cremated remains of your loved one. A small amount of cremated remains is held in a silver or gold capsule, keeping your loved one close forever.

**Crystal tealight****from £70***10 x 10 x 12 cm. Holds a small amount of cremated remains.*

This beautiful tealight is crowned with Swarovski crystal elements and holds a small amount of cremated remains within a silver or gold cylinder. The top of the tealight can be engraved with a special message for an additional charge.

**Crystal butterfly****from £70***10 x 10 x 12 cm. Holds a small amount of cremated remains.*

This beautiful crystal butterfly holds a small amount of cremated remains within a silver or gold cylinder.

# Cremated remains

## PHOTO MEMORIAL URNS

A stylish and innovative way to create an individual memorial, your loved one's cremated remains can be held discreetly within a range of different photo frames to display around the home.

### Tributes frame pod™ from £95

The cremated remains pod, with its smooth curving lines and dark matt textured finish, is barely noticeable behind the picture frame it supports. A choice of frames and mounts are available in contemporary and traditional styles to suit all tastes.

#### 1 Small

*19 x 13 x 9 cm.  
Holds 0.6 litres.*

#### 2 Medium

*23 x 15 x 11 cm.  
Holds 1.1 litres.*

#### 3 Large

*32 x 23 x 15 cm.  
Holds 4 litres.*



### Tributes frame from £85

A wall hanging frame discreetly conceals a casket behind the pictures to hold your loved one's cremated remains. Available in a choice of sizes and designs, the versatile memorial is ideal for families wishing to share a lasting memento.





## FOR SCATTERING OR KEEPING

This range of products are biodegradable and specifically designed to scatter the cremated remains with ease. They can also be used to keep the cremated remains at home.

### Treasure cushion

Treasure cushions are hand woven in eco-friendly, biodegradable bamboo and are perfect for the burial or scattering of cremated remains.

Available in four sizes and with natural calico lining. Please note each size holds a different amount of cremated remains, please ask for further information.

*All sizes include floral spray and ribbon (as pictured below).*



<b>1 Extra small</b>	<b>£30</b>
----------------------	------------

*10 x 8 x 5 cm. Holds a small amount of cremated remains.*

<b>2 Small</b>	<b>£35</b>
----------------	------------

*16 x 13 x 5 cm. Holds 0.3 litres.*

<b>3 Medium</b>	<b>£40</b>
-----------------	------------

*22 x 18 x 5 cm. Holds 0.5 litres.*

<b>4 Large</b>	<b>£45</b>
----------------	------------

*30 x 22 x 5 cm. Holds 1 litres.*



# Cremated remains

## WATER URNS

### Water urn £90

*33 x 35 x 8cm. Holds 4.6 litres.*

Biodegradable water urns are designed specifically for water burial and will float briefly to allow a final farewell before gracefully sinking.

They are sustainably produced in a variety of natural materials, including recycled paper, rock salt, gelatin and sand. Although they were designed for water burial, all of these urns can also be used for earth burial.



## DAISY® LEAF URNS

### Leaf urn £55

*Holds up to 4.6 litres.*

A range of handmade biodegradable urns decorated with dried leaves - all available in blue, green, red and natural.

These urns are available in square, rectangle, tube and oval.



# Cremated remains

## FOR SCATTERING OR KEEPING

### Themed picture tubes

Themed picture tubes are available in a range of beautiful designs and are suitable for the burial or scattering of cremated remains or as keepsakes.

Themed picture tubes are created from over 90% recycled materials and are biodegradable, making them an environmentally friendly choice.

**1 Small** **£30**

*D 7.5 cm, H 13.5 cm. Holds 0.4 litres.*

**2 Medium** **£40**

*D 11 cm, H 22.5 cm. Holds 2 litres.*

**3 Large** **£45**

*D 13 cm, H 37 cm. Holds a full set of cremated remains.*

**4 Bespoke design** **£65**

*Any size.*



### Eco bamboo urns

The Eco Scattering™ urn is the new, environmentally friendly way to scatter the ashes of a loved one. The urn is made entirely of bamboo, a sustainable material, which makes the product completely biodegradable.

The Eco Scattering™ urn is equipped with a unique closing mechanism, making the urn especially suitable for scattering ashes. Using the locking pin system the ashes are kept safe when you are on the way to the scattering location.



**1 Scattering large urn** **£89**

*H 36cm. Holds 3 litres.*

**2 Scattering small urn** **£75**

*H 25cm. Holds 0.6 litres.*

**3 Burial urn** **£89**

*H 21cm. Holds 3.1 litres.*

**4 Water urn** **£145**

*H 32cm. Holds 3.8 litres.*





# Memorial jewellery

## LEATHER BRACELETS

### Embrace bracelet

from £99

*Holds a small amount of cremated remains.*

Authentic braided leather bracelet with a Sterling silver push button clasp which hides a small space inside for a symbolic amount of ashes, which closes easily and safely. The end result is an elegant bracelet offering a subtle way for you to keep the memory of your loved one with you at all times. Available in four sizes, S, M, L and XL.



ASK FOR OUR FULL BROCHURE

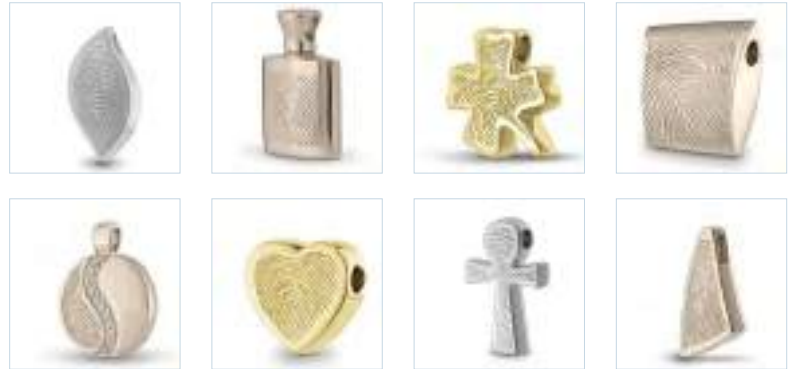
## JEWELLERY WITH A PERSONAL TOUCH

The fingerprint jewellery are engraved by means of digital printing. A laser is used to engrave the fingerprint image deeply on the jewel, which gives a very high-quality result. A layer of silver or gold plating then is applied as a finishing touch.



### Pendants holding cremated remains from £209

Available in 14ct yellow gold, 14ct white gold, 18k yellow gold, 18k white gold and sterling silver. Pendant can hold a very small amount of cremated remains.



### Pendants

from £145

Available in 14ct yellow gold, 14ct white gold, 18k yellow gold, 18k white gold and sterling silver.



### Rings

from £189

Available in 14ct yellow gold, 14ct white gold, 18k yellow gold, 18k white gold and sterling silver.



### Charm beads

from £115

Available in 14ct yellow gold, 14ct white gold, 18k yellow gold, 18k white gold and sterling silver.

**ASK FOR OUR FULL BROCHURE**

# Memorial jewellery

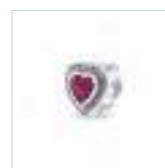
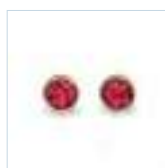
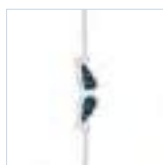
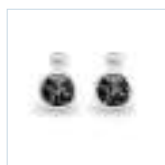
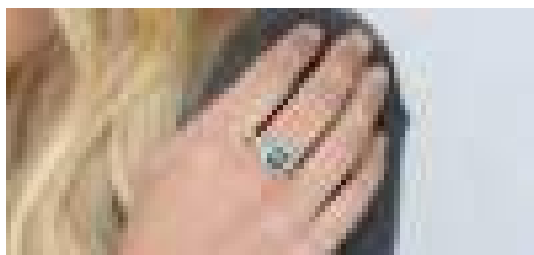
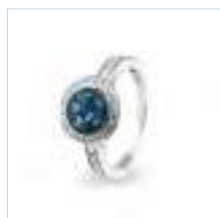
## JEWELLERY WITH A PERSONAL TOUCH

Having a piece of jewellery that captures a small amount of cremated remains or hair is a truly special and personal keepsake. A perfect way to treasure their memory, keeping them close to you forever.

Memorial jewellery

from £139

Available in 9ct gold and sterling silver.



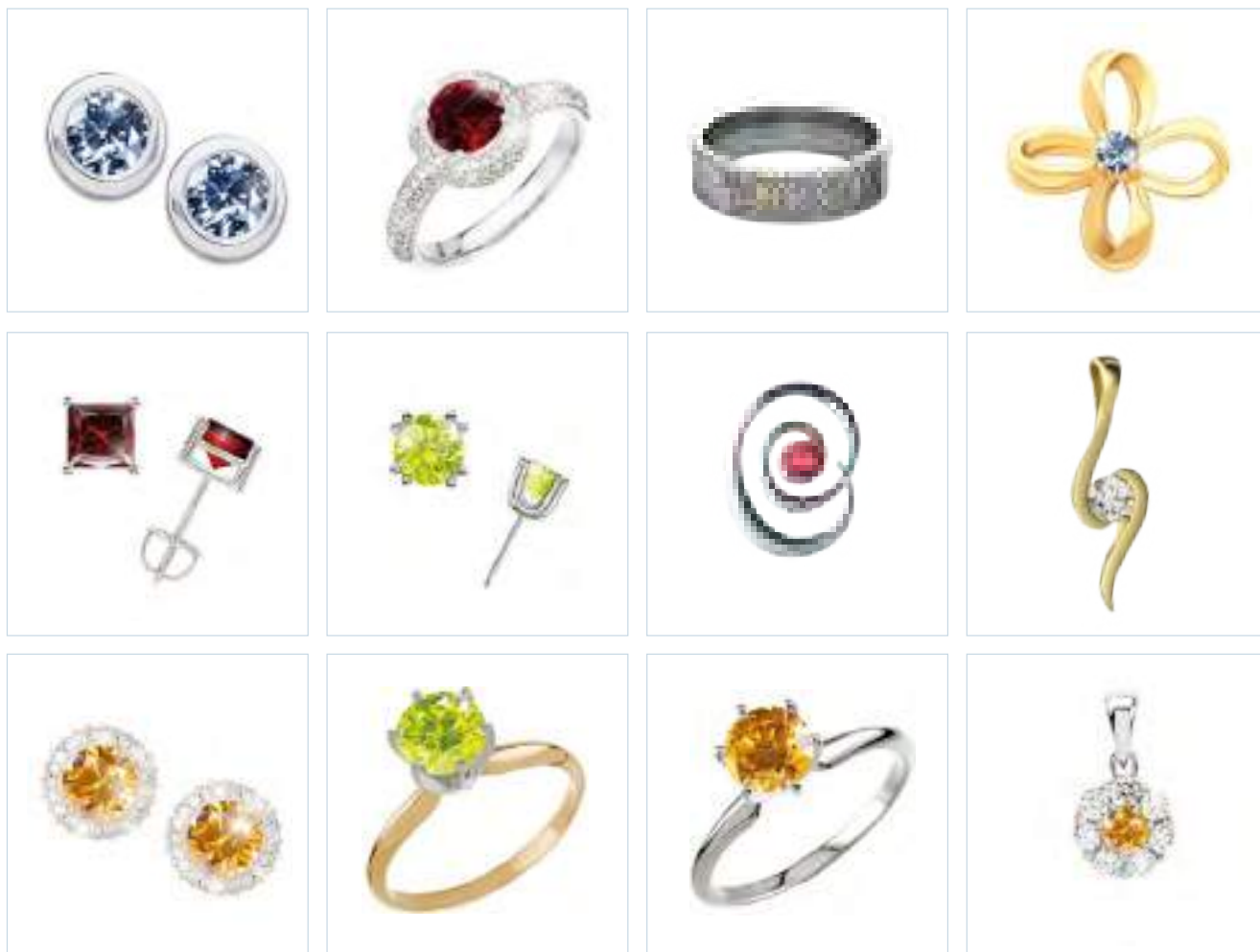
ASK FOR OUR FULL BROCHURE





# Memorial jewellery

## CELEBRATION OF LIFE DIAMONDS



A certified, high quality diamond memorial, created from the carbon within the cremated remains or hair of your loved one.

Each diamond is unique and no two will ever be exactly the same. These gems can be a beautiful way to celebrate a life, often becoming family heirlooms, passed down from generation to generation.

All colours are non-fading and retain a head-turning, lustre and brilliance found in natural diamonds.

**Diamond jewellery**

**from £515**

*Holds a small amount of cremated remains.*

**ASK FOR OUR FULL BROCHURE**

## CREMATED REMAINS WITHIN GLASS

Keep your loved one close to you always with Ashes into Glass. Your loved one's cremated remains are added to crystal glass to create unique memorial jewellery and paperweights.

Items hold a small amount of cremated remains.



**Paperweight**  
from £295

Designed to represent a spiritual embrace through twists of coloured crystal and clear glass.



All the Ashes into Glass jewellery items are available in sterling silver, white gold or 9ct gold and in a choice of five different colours.

### Cufflinks

from £345

The classic design makes these cufflinks perfect for wearing every day or just on that special occasion.



### Charm beads

from £125

Be together always with this beautiful charm bead on your bracelet (fits all quality bracelet brands including Pandora).



### Tribute ring

from £395

Hold the memory of your loved one on your hand with this elegant ring design, complete with your personal inscription engraved on the inside of the band.

### Pendants

from £245

Keep your loved one close to your heart with these ladies 45 cm necklaces, complete with your personal inscription engraved on to the back of the pendant.



### Earrings

from £195

This stylish pair of earrings are a beautiful way of remembering your loved one.

**ASK FOR OUR FULL BROCHURE**

# Ashes into sea



## SOLACE REEF

Either a beautiful memorial or somewhere where your loved one's ashes are held, their Solace Stone slides from the deck and falls away to the sea bed. As the reef sanctuary evolves and flourishes it will become home and haven to numerous marine species. With the passing of time your loved one's Solace Stone will become part of the reefs future growth and protection.

Their Solace Stone remains a permanent reminder to all, of their unique life, which has helped create this unique place.



No longer seen as an unconventional solution to a global problem, Artificial Reef Sanctuaries around the world are helping to create healthy environments where sea life does not only survive, but thrive again.

Memorial Reefs are part of that change and have a huge role to play. The Solace Reef (off the coast of Dorset) will create an enduring living memorial for your loved one. First of its kind in the UK.

- Your own individual Solace Stone
- Creates a permanent memorial
- Crown Estate Approvals in place
- Marine Management Organisation Licence



**Service** **£3,495**

What's included:

- Cost of all materials and manufacturing of your Solace Stone
- Biodegradable ashes carrier
- Engraved granite plaque
- Transportation of the Solace Stone and up to 12 family/friends to the Solace Reef site
- Certificate of placement with longitude and latitude details

# Ashes into space

## AURA FLIGHTS

---

How do you celebrate a loved one who spent their life exploring and adventuring? We are all made of stardust — so when the time comes, why not return to the stars?



Brought to you by the world's leading experts in Near Space flight, Aura Flights' unique memorial services allow you to send a loved one on a breathtaking final journey into space, 100,000 feet above the Earth, where our blue sphere hangs in the black vacuum of space.

You can book a dedicated flight to have your loved one's ashes scattered in space with the Memorial Launch, or fulfil a lifelong dream of traveling to the stars by sending a portion of ashes on a shared flight to space and back with the Voyager Launch.

Both launch options are filmed using space-capable 4K camera systems to create a beautiful memorial video commemorating the incredible event. Using renewable hydrogen gas, non-toxic and biodegradable balloons and with all equipment launched recovered and reused, this service is environmentally conscious too.

### Voyager launch

£495

Perfect for adventurers and explorers, we take a symbolic portion of ashes on a shared monthly flight into space and back. The ashes are returned to you in an elegant miniature urn along with an image and video of the unique view from their flight.

### Memorial launch

£2,950

Celebrate your loved one's final journey with a flight just for them! We launch the complete complement of ashes into space in a patent-pending intelligent scatter vessel, which releases them in a gentle cascade against the stunning backdrop of planet Earth floating in the inky blackness of space. From there, they spend up to 6 months travelling, spreading across the entire planet, before finally returning to the Earth in the heart of raindrops and snowflakes. The memorial launch includes a personalised memorial video with photos, videos and music chosen by you, and a dedicated memorial page on the Aura Flights website for friends and family to share in this unique celebration of life.



Journal  
Paris  
1903  
He

Monsieur J...  
14 rue de la...

Adress  
Je suis en de bon voyage  
à Paris...  
Madame...  
Paris

CARTE POSTALE



1907

CARTE POST

CARTE POSTALE

CARTE POSTALE

Le Jeune  
L'Assort...  
30, Rue de Bondy 200  
PARIS



M<sup>me</sup> R. Briot  
50 rue de la...  
Paris 1<sup>re</sup>

Postale  
Je suis de bon et te tranquille  
ma petite chérie.  
Je pense que tu es toujours  
en bonne santé ainsi que tes  
tu vas avec amour que  
je ne t'oublie pas un seul  
instant surtout je pense  
à mes amis.  
Je t'embrasse mes meilleurs  
baisers du fond du cœur  
ton petit Joe à toi seule

M<sup>me</sup> Grosjean  
8 Rue de Mail  
MONTLHERY  
(Seine et Oise)

POSTALE



Monsieur...  
L...  
70 Rue d'Angoulême  
Paris

# Memorial ceremonies

## SCATTERING AND BURIAL OF CREMATED REMAINS

We can arrange and liaise with a crematorium, cemetery or church authority for the scattering or burial into a grave. This includes the local transportation of your loved one's cremated remains and the services and attendance of a funeral colleague on the day.

Our memorial service packages include a personal consultation to discuss your requirements either at our funeral home, via the phone or in the comfort of your own home, where we will provide:

- Comprehensive information and guidance for all types of memorial services and interment
- Collation and clerical assistance with the completion of all statutory documentation
- Guidance on monumental masonry, cremated remains containers, floristry, newspaper notices, funeral vehicles and all other associated products and services
- Management of all enquiries relating to the service

To discuss your personalised memorial ceremony, please contact your local funeral home.

Memorial ceremony

POA



ASK FOR OUR FULL BROCHURE

# Memorial headstones

A memorial headstone provides a focus for personal memories – a place to visit, lay flowers and reflect on happy times with your loved one.

## A LASTING TRIBUTE FOR YOUR LOVED ONE



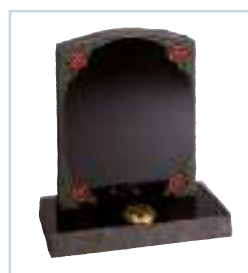
We have a wide range of designs to choose from and source only the finest materials to produce memorials to the highest standards.

When choosing a memorial there are often limitations in place from burial authorities regarding the size, materials, colours and wording used. We can provide advice and guidance, helping you through every step of the process. When you're ready to discuss your memorial choices, whether before or after the funeral, please contact us and we can arrange an appointment at one of our funeral homes or in the comfort of your own home. We can also make arrangements by post, phone, video call or email, if preferred.

### Aftercare: cleaning, maintenance and more

We can add additional inscriptions to existing memorials and also offer a cleaning service. Additionally we offer maintenance packages to keep the headstone looking its best and insurance options to safeguard against any issues in the future.

For more information or a free quotation speak to your Funeral Consultant.



**ASK FOR OUR FULL BROCHURE**





# Pre-paid bespoke funeral plan



“Complete peace of mind for you and your family”

None of us like to think about the end of life, but by planning ahead we can reduce the burden on the people we love, at a painful time.

Our pre-paid, bespoke funeral plan can be tailored to your individual needs so you can choose exactly what you want. The cost is fixed and protects you and your loved ones from any rise in costs.

## Funeral Planning Team

☎ 0800 243 380

Monday - Friday 9am - 5pm

🖱 [funeralplans.coop](https://www.funeralplans.coop)

Southern Co-operative Funerals Limited is authorised and regulated by the Financial Conduct Authority (FCA).



## Tailored to your individual needs

We recognise that making funeral arrangements in advance of need involves making many important decisions. We believe you should have the opportunity to make those important decisions yourself and have the time to think carefully about what you and your family want.



## No hidden costs

A pre-paid, bespoke funeral plan is fixed to provide the funeral services paid for with no hidden charges or conditions. Whether the funeral takes place in five or 50 years time, there will be nothing left to pay\* - subject to terms and conditions.

*\*Please note, burial plot costs are not included with any of our funeral plans and will need to be purchased separately. Excludes our online simple plan where only a contribution is paid towards the cost of disbursements. If paying over 24 months or less, any shortfall will need to be pay at the time of the funeral.*



## Flexible payment options

We offer an easy payment scheme to spread the cost over 1-10 years through monthly instalments, securing the cost for a fixed monthly payment. Monthly instalment fee applies.



## Local expertise

At your time of need, your funeral arrangements will be in the hands of a trusted and experienced Funeral & Memorial Consultant. We work closely with local doctors, nursing homes, hospitals, crematoriums and burial grounds to ensure that all funeral arrangements run as smoothly as possible.

If you want your ashes sent into space, Holst's The Planets played on your departure and your service broadcast on the web, have them.

**It's your funeral.**

# Championing responsible business

Our business has always had a purpose beyond profit, working together with others for the benefit of our communities. Underpinning this is our commitment to championing a responsible and different way of doing business, one that has a positive impact on society, the local economy and the environment and plays its part in creating a fairer society and sustainable future.

We support the global goals (UN's Sustainable Development Goals), described as the world's 'to-do list', focused on addressing the world's biggest challenges. These are a call to action to end poverty, protect our planet and ensure everyone can enjoy peace and prosperity. We ensure our plans support their delivery and we work collaboratively with our colleagues, customers, members, and other partners to promote this agenda regionally.



## OUR ENVIRONMENT

We are proud to be supporting initiatives to make our funerals and our business more environmentally sustainable. These initiatives help us to reduce our environmental footprint and enhance the natural areas in which we operate.

## CLIMATE ACTION

We are keen to play our part in tackling the climate and ecological challenges we now face, so we are urgently cutting greenhouse gas emissions and making space for wildlife and nature recovery.

**We are committed to reducing absolute greenhouse gas emissions from our operations by 50% by 2030 compared to 2019** i.e. those emissions relating to the electricity, gas, fuel and refrigeration we use.

We are making good progress. A fully electric hearse (see page 17) is part of our End of Life Services vehicle fleet alongside other hybrid vehicles. Alongside site based energy saving initiatives, we have invested

in LED lighting in all our funeral homes and solar panels in some locations. We also encourage our colleagues to identify energy saving opportunities to take action to save energy. We operate a recycling programme in our funeral homes and work in partnership with Wildlife Trusts across our region to support nature recovery at our own sites and within our communities.



## RESPONSIBLE SOURCING

In line with our business aims and principles, we demand the highest ethical standards when sourcing the products and services we sell and use within our business. We work in partnership with our suppliers to ensure our products are sourced in an ethical and sustainable way. Forest Stewardship Council (FSC) certified wood is used in many of our coffins and caskets. Evolving our eco range, we continue to offer a range of eco coffins and caskets for cremated remains and burials. These are handcrafted from natural and biodegradable materials and are especially popular for woodland burials.



## SUSTAINABLE COMMUNITIES



Our community programme enables colleagues throughout all our End of Life services to actively engage with local good causes and the community. Through donations, supporting charity awareness days, hosting collection points for those in need and our free Bereavement Care service, we'll continue putting others at the heart of what we do to help create inclusive neighbourhoods that are green, safer and healthy for future generations.

## OUR PEOPLE

Our business success ultimately depends on our people. Their commitment to our business and the service they provide to our clients is what sets us apart from other businesses.

We in turn are committed to developing our colleagues and their skills through apprenticeships and industry-specific qualifications.



## WORKING ETHICALLY

In line with our business aims and principles, we demand the highest ethical standards when sourcing the products and services we sell and use within our business. We work in partnership with our suppliers to ensure our products are sourced in an ethical and sustainable way.



*The Oaks Havant Crematorium*

# Our burial grounds and crematoria



## The Oaks

Havant crematorium



Award-winning crematorium, set in 8.5 acres and surrounded by beautiful ancient semi-natural woodland and wildflower meadow, providing a picturesque setting for the crematorium building which has been sensitively designed. As well as creating a space that is relevant for all cultures, ages and beliefs, it provides a tranquil sanctuary for the bereaved, inspired by its natural setting.

Bartons Road | Havant | PO9 5NA | 023 9222 2648  
[info@havantcrematorium.co.uk](mailto:info@havantcrematorium.co.uk) | [havantcrematorium.co.uk](http://havantcrematorium.co.uk)

## Hinton Park

woodland burial ground  
& funeral directors



Found just outside of New Milton and Christchurch on the edge of the New Forest. Our woodland burial ground and funeral directors is set in beautifully rural surroundings against a backdrop of established woodland, offering an attractive and peaceful setting to arrange/attend funeral services or time for reflection.



Wyndham Road | Walkford | Christchurch | BH23 7EJ | 01425 278910  
[info@hintonparkburial.co.uk](mailto:info@hintonparkburial.co.uk) | [hintonparkwoodlandburialgroud.co.uk](http://hintonparkwoodlandburialgroud.co.uk)



## Poole & Wimborne

woodland burial ground & funeral directors



Found in the south coast town of Wimborne, near Poole. Positioned in 20 acres of mature woodland and rolling green hills, the natural beauty on display here makes our grounds an ideal place for quiet contemplation and remembrance. These peaceful grounds are home to a rich variety of wildlife and a natural lake as well.

Greenhill Road | Wimborne | BH21 2RG | 01202 888887  
[info@woodlandburialground.uk.co.uk](mailto:info@woodlandburialground.uk.co.uk) | [pooleandwimborne woodlandburial.co.uk](http://pooleandwimborne woodlandburial.co.uk)

# Our burial grounds and crematoria



## Clayton Wood

natural burial ground



Set in 15 acres of countryside within the South Downs National Park. Situated below the Jack and Jill Windmills, our beautiful site has various dedicated areas for full natural burial and cremated remains, as well as memorial scattering areas, surrounded by native trees for future generations to enjoy.

Brighton Road | Clayton | West Sussex | BN6 9PD | 01273 843 842  
[claytonwood.co.uk](http://claytonwood.co.uk)

## East Devon

crematorium



Set in over 8 acres of landscaped memorial gardens, against a backdrop of established woodland, offering an attractive and peaceful setting for funeral services or time for reflection. Our gardens feature a native mix of indigenous broad leaf trees, offering an attractive and peaceful setting for funeral services and dedicated memorials.



London Road | Strete Raleigh | Whimble | Exeter | EX5 2PT | 01404 823017  
[office@eastdevoncrematorium.co.uk](mailto:office@eastdevoncrematorium.co.uk) | [eastdevoncrematorium.co.uk](http://eastdevoncrematorium.co.uk)



## Mayfields

woodland burial ground



Award-winning woodland burial ground, found in Eastham, on the south bank of the River Mersey. Our woodland burial ground is set in beautifully rural surroundings against a backdrop of established woodland, with stunning views across the river, offering an attractive and peaceful setting for funeral services or time for reflection.

Ferry Road | Eastham | Wirral | CH62 0DB | 01513 272360  
[info@mayfieldsburial.co.uk](mailto:info@mayfieldsburial.co.uk) | [mayfieldswoodlandburialground.co.uk](http://mayfieldswoodlandburialground.co.uk)





*Clayton Wood Natural Burial Ground*

# Bereavement support

When someone you love has died, there is so much to do: organising the funeral, contacting family and friends, notifying people of the death and dealing with the estate. It is only after the funeral has taken place that many people begin to come to terms with their new situation. Family and friends may offer help and companionship, but they lead their own lives too. For those whose families have grown up and left their parents to have families of their own, it is an especially difficult adjustment.

We have developed our unique and experienced Bereavement Care because we understand just how hard this time can be. **Bereavement Care is a free service** designed to support individual needs, and is open to anyone in the community, not just people who have used our services.

**Bereavement Care**  
talking • caring • supporting



## THE TEAM

We are a small team of experienced and trainee counsellors who share a wealth of experience in helping and supporting the bereaved. The team has worked in funeral services for over 20 years and has qualifications in counselling and mindfulness. Together we can help to support you and the community in which we serve in a variety of different ways free of charge.

**For further information  
please contact:**

☎ 08081 691922

@ info@bereavementcare.uk

🖱 bereavementcare.uk



## OUR FREE SERVICES

---

### One-to-one bereavement support

You can come along and talk to one of the Bereavement Care team in a safe, confidential and private environment.

### Bereavement wellbeing groups

The purpose of groups is to provide a time and place where you will be able to meet with other people who are experiencing the effects of bereavement and will understand something of how you are feeling. The groups meet once a month in different areas. We also offer video call, email or telephone bereavement support.

### Friendship/Social groups

These groups meet socially to help people gain confidence and make new friends after a bereavement.

### Educational sessions

These workshops are aimed at organisations who want to have a better understanding about the funeral process, the stages of grief and how to help or work with bereaved people.

The Bereavement Team is available to give talks about all aspects of bereavement and the funeral profession. These educational sessions can take place online or in person.





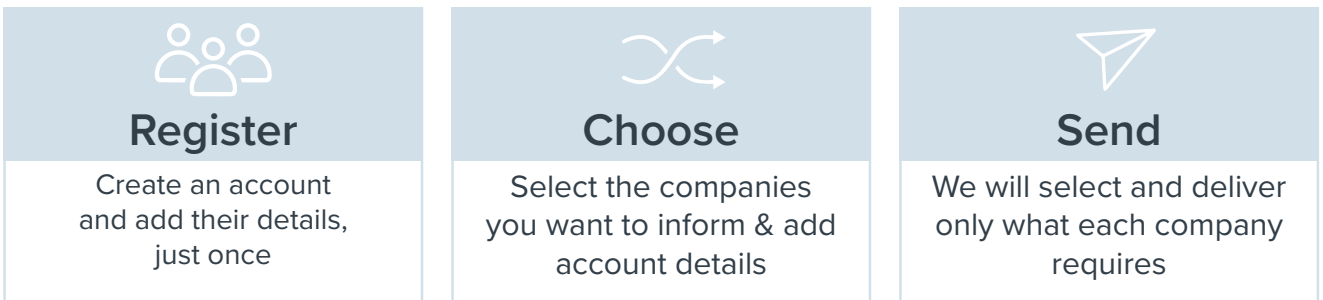
# Life Ledger

Life Ledger is the **free**, easy-to-use service that makes notifying companies of a death simpler, faster and less stressful.



As seen in **The Guardian** **Which?** **GOOD HOUSEKEEPING** **BBC** **Gazette** **Daily Mail**

## IN 3 EASY STEPS:



## Completely free to use to notify

- Utilities
- Gas
- Water
- Building societies
- Energy providers
- Banks
- Credit cards
- Broadband
- TV services
- Insurance companies
- **and much more...**

- ✓ Register once and tell 1000+ organisations of a death from one central point
- ✓ Avoid repeating the same difficult information to every company individually



Register now at  
[www.lifeledger.com](http://www.lifeledger.com)

# Coffins & caskets

## AMERICAN CASKET COLLECTION

### Metal caskets

The metal caskets are all hermetically sealed. These caskets are water tested to detect any possible leaks and are then subjected to internal pressure tests, ensuring each one is air and water tight.

*Please note these caskets are only suitable for burial.*

1. Indigo  
£1,810

2. Churchill  
£1,785

3. Mercedes  
£1,615

4. Nightfall Silver  
£1,695



## SOLID WOOD CASKETS

The range of solid wood caskets are comprised of only the finest grade of woods. Elegant ash, cherry, mahogany, maple, oak, and poplar woods are buffed and polished to enhance the natural grain and give each casket a silk-smooth finish.

*Suitable for both cremation and burial - some coffin features may vary to those shown if ordered for cremation.*



Essence  
£2,185



Wellington  
£2,040



Harvest Oak  
£2,125

## PERSONALISATION OPTION

Extensive line of personalised cap panels designed and supplied to fit a casket of your choice. These can be personalised with imagery and wording. Supply a design or idea for us to proof for your approval. Examples shown on an American-style wood and metal casket.

Personalisation

£110



ASK FOR OUR FULL BROCHURE

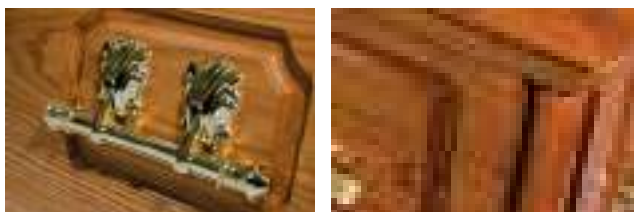
# Coffins & caskets

## BRITISH COFFIN COLLECTION

**The Hailey casket**  
**£1,575**



A high gloss, superb solid oak casket constructed with raised panelled sides and a special hinged raised lid. The interior is upholstered in a luxurious satin taffeta suite complete with a quilted coverlet and pillow. An inscribed nameplate together with a set of eight matching brass coloured handles further enhances the elegance of this crafted casket.



A high gloss, superb solid mahogany casket constructed with raised panelled sides and a special hinged raised lid. The interior is upholstered in a luxurious satin taffeta suite complete with a quilted coverlet and pillow. An inscribed nameplate together with a set of eight matching brass coloured handles further enhances the elegance of this crafted casket.

**The Mira casket**  
**£1,575**





## ITALIAN COFFIN COLLECTION

### The Valentino casket

A beautiful solid wood coffin featuring up to six removable and engravable wooden heart keepsakes inset into the coffin lid - available in over 20 colours.

The hearts can be engraved with a name or a personal message and can either be kept as a treasured keepsake by family and friends or placed back on to the coffin during the funeral service.



Additional  
wooden heart  
£50 each

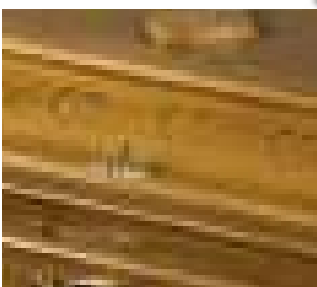
White (including up to 3 hearts)

£1,590



Medium oak (including up to 3 hearts)

£1,590





# Coffins & caskets

## ITALIAN COFFIN COLLECTION

---

### The Last Supper

£1,270

A solid wood coffin, carefully carved with a striking 'Last Supper' feature panel to the sides. Polished to a high-gloss finish. Solid brass handles are available or electro-brass plastic handles suitable for cremation. Fitted with a beautiful satin interior.



### Trinity Head of Christ

£1,610

A magnificent solid oak coffin with the 'Head of Christ' carved into decorative panels on the sides, and gently shaped raised lid. The Trinity Head of Christ comes in a warm oak, with matching wood bar handles. The satin interior is available in a choice of colours.



# Coffins & caskets

## ENGLISH MADE COFFINS

---

English Made Coffins are handcrafted with care and thought, providing a beautiful resting place for loved ones. Each coffin comes with a book and one keepsake butterfly. The book inscription gives the family and friends an opportunity to personalise the coffin, whether it is a message, lyrics or a reading.

All coffins come with a pillow and a luxurious liquid poly-satin fabric lining in a choice of colours.

Walnut  
£1,015

---



Maple  
£975

---



The English Made Glitter Coffin follows the same contemporary elliptical style of a standard English Made Coffin but can be wrapped in a choice of nine different glitter colours or a fully personalised design.

Glitter coffin  
£1,085



Glitter printed  
coffin  
£1,015



Printed coffin  
£1,015



## INTERIOR OPTIONS

Cerise Pink



Cobalt Blue



Onyx Black



Pearl Ivory



Royal Purple



Wine Red



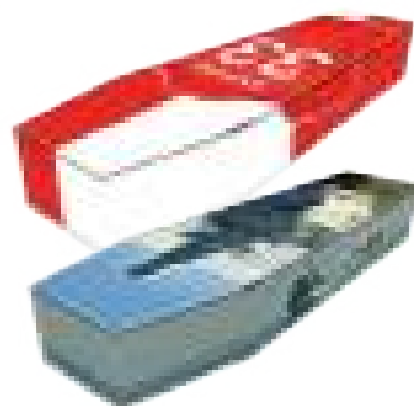
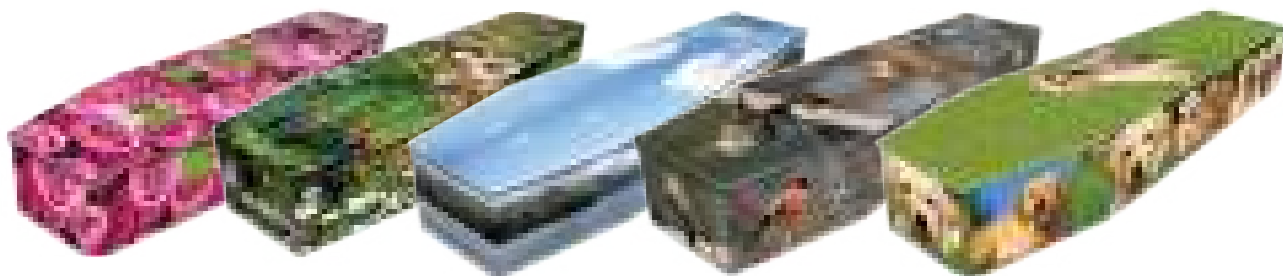
# Coffins & caskets

## THEMED PICTURE COFFIN COLLECTION

Every life has a story and our range of colourful coffins can help you tell it. We have a wide range of themes and designs to reflect and celebrate the life of your loved one.

Standard design

£820



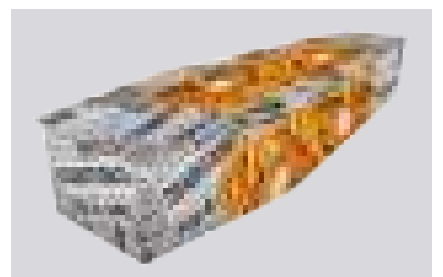
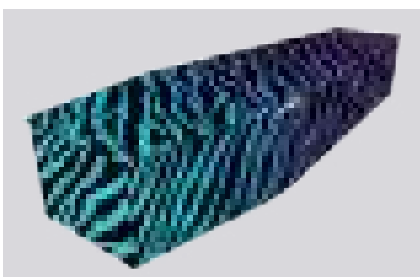
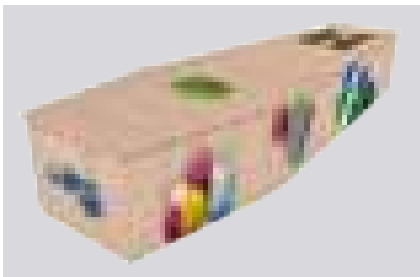
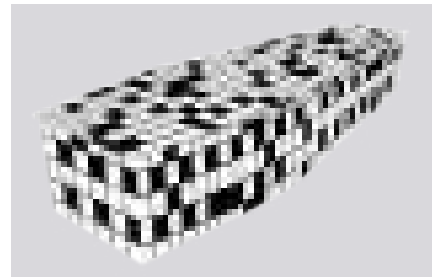
ASK FOR OUR FULL BROCHURE

## BESPOKE DESIGN

Personalised design

from £830

Capture the essence and personality of your loved one with your own unique bespoke design – from a love of the theatre to gourmet meals, high fashion to sporting heroes; you can create a truly personal design. Whether you have specific family photos or have seen something you would like to incorporate, the design team are on hand to assist you. If you would like, you can even visit their office and sit with a designer to create the design together.



# Coffins & caskets

## ECO COFFIN COLLECTION

Our eco collection provides an attractive, comforting and environmentally friendly alternative to the traditional style coffin. Hand-crafted from natural and biodegradable materials, this style of coffin is popular for woodland burials.

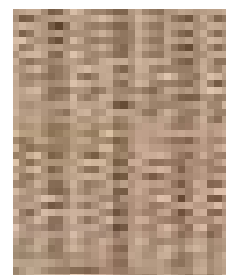
### English willow coffins

Willow is an environmentally renewable resource, used over the centuries for its strength, beauty and practicality. The willow plant grows up to 8ft in height and can be harvested annually from the same crown for up to 60 years. All coffins within the range are hand woven by skilled weavers using the highest quality willow. Personalise the coffin colour, handles and band at no extra cost.

*Please note floral tributes are an additional cost.*

**Somerset willow traditional with coloured bands & handles, Round natural**  
£935

**Somerset willow traditional plain**      **£935**



**ASK FOR OUR FULL BROCHURE**





Somerset willow  
rainbow traditional  
£1,050

Somerset willow  
painted traditional  
£1,025



Coffin colours  
available:



Handle/  
band colours  
available:



# Coffins & caskets

## ECO COFFIN COLLECTION

### Bamboo coffins

Bamboo is one of the fastest growing plants in the world, making it a sustainable choice for a coffin. It does not involve the cutting down of trees as bamboo is re-harvested approximately every four years.



Oasis Bamboo  
£850

Daisy  
Bamboo  
Premium  
£945



### Seagrass coffins



Seagrass  
Oval  
£875

## Banana Leaf coffins

Banana Leaf  
Square/Traditional  
£1,020



## Water Hyacinth coffins

Water Hyacinth  
Half Round/Traditional  
£1,010



## WOODEN HEART TAGS



Wooden heart message tags are the perfect way to add a farewell message to an eco coffin or casket, individually engraved with your personal message.

### Wooden engraved heart or circle tags

Pack of 4	£40
Pack of 8	£55
Pack of 12	£60

*Please note - coffin pictured not included*



# Coffins & caskets

## NATURAL WOOLLEN COFFINS

The Hainsworth woollen range of coffins are hand constructed in Yorkshire using pure new British wool and supported on a strong frame made from recycled cardboard.

The interior is generously lined with organic cotton, attractively edged with jute and complete with a soft organic cotton covered pillow, whilst the exterior is finished with a beautiful blanket stitch detail, jute handles and simple wooden toggle fastenings.

**Please note:**

- *Due to the nature of the material, colour and finish may vary from that shown.*
- *Floral tributes not included.*

Woollen coffin  
limestone  
£975



Woollen coffin  
natural  
£975



# Coffins & caskets

## EXPRESSIONS COLLECTION

Expressions Coffins - a new way to personalise any funeral. Mix and match from a range of colour choices, by painting the coffin a particular colour, or leaving it in its natural wood. A glitter panel or picture can then be added onto the side panel creating a visually stunning piece of art.



### Engraved £735

An oak veneer style coffin fitted with a raised lid. Can be finished with any Dulux colour.

**Stage 1** - Choose Wording  
**Stage 2** - Choose Colour



### Printed

£680

A natural oak effect raised lid, any design can be printed directly onto the sides and ends of the coffin, offering a high quality, tailor-made coffin. Also available in light oak.



### Glitter Panel

£1,035

An oak veneer style coffin fitted with a raised lid. Can be finished with any Dulux colour.



### Full Glitter

£960

Our MDF coffin is covered in full glitter - offering a truly unique send-off.



### Blackboard Lid

£780

An oak veneer style coffin with an opportunity for friends and family to personalise the coffin with messages.

**ASK FOR OUR FULL BROCHURE**

# Coffins & caskets

## TRADITIONAL COFFIN COLLECTION

Our traditional coffin range includes solid oak and mahogany, as well as veneered wood using medium density fibreboard (MDF) and chipboard.

### Solid wood coffins



**The Asta coffin**

**£885**

A superb solid oak coffin built to a classic style. This elegant coffin offers the ultimate in craftsmanship with traditional panelled sides and a raised lid. The coffin comprises of a high quality satin taffeta border with an inscribed nameplate and a set of six matching brass coloured handles.



**The Adora coffin**

**£845**

A solid mahogany coffin finished in a high gloss with traditional panelled sides and a raised lid. The coffin comprises of a high quality satin taffeta border with an inscribed nameplate and a set of six matching brass coloured handles.



## MDF wood veneer coffins

### The Jovan coffin

£450

A highly polished oak veneered MDF coffin with traditional panelled sides and a flat lid. The coffin comprises of a high quality satin taffeta border with an inscribed nameplate and a set of six matching brass coloured handles.



### The Beata coffin

£505

A highly polished oak veneered MDF coffin with panelled sides and a raised lid in a traditional style. The coffin comprises of a high quality satin taffeta border with an inscribed nameplate and a set of six matching brass coloured handles.



# Coffins & caskets

## TRADITIONAL COFFIN COLLECTION

---

### Chipboard wood veneer coffins



The Dulcinea coffin

£410

A polished oak veneered chipboard coffin. The coffin comprises of a high quality satin taffeta border with an inscribed nameplate and a set of six matching nickel plated handles.

*Colours of these coffins may vary to those shown.*



The Sancia coffin

£370

A polished mahogany veneered chipboard coffin. The coffin comprises of a high quality satin taffeta border with an inscribed nameplate and a set of six matching brass plated handles.

*Colours of these coffins may vary to those shown.*



# Standard attended funeral charges

Every funeral we arrange is unique and personal. It's the choices you make that will determine the final cost. Our standard attended funeral starts from **£3,120** (excluding disbursements) and is made up of the following product and service charges:



## Taking care of all necessary legal and administrative arrangements

£795

- Local premises and personnel available 24 hours a day, 365 days a year to respond to the initial call and any ongoing queries.
- A personal consultation to discuss your funeral requirements either at our funeral home, via the phone or video call or in the comfort of your own home (subject to any current restrictions that may apply) - where we will provide:
  - *Comprehensive information and guidance for all types of funerals*
  - *Collation and clerical assistance with the completion of all statutory documentation*
  - *Advice on the certification and registration of death and other related documents and associated administration*
  - *Guidance on monumental masonry, floristry, pre-paid funerals and other associated products and services*
  - *Liaison with all local authorities, clergy, police, medical and other professionals on your behalf*
  - *Arrangement of newspaper notices and any other announcements/acknowledgements*
  - *Reception and care of floral tributes, as required*
  - *Administration of charitable donations, as required*
  - *Set up of an online tribute*
  - *Confirmation of funeral details in writing to the family and other third parties*
  - *Management of all enquiries relating to the funeral*
  - *Automatic inclusion in the Bereavement Register*
- Collection of cremated remains from a local crematorium, if required.

**Collecting and transporting the deceased person from the place of death** **£325**

We will provide initial guidance, private ambulance/estate car and trained uniformed colleagues to collect your loved one from any address within a 25 mile radius (50 running miles). This service is available 24 hours a day, all year round.

*Additional mileage charge £1.70 per mile (beyond 50 miles). Additional ferry/toll charges will be added at cost.*

**Care of the deceased person before the funeral in appropriate facilities** **£995**

- Modern and hygienic mortuary facilities up until the day of the funeral
- Care for your loved one up until the day of the funeral, including basic preparation
- Trained and dedicated colleagues to care for your loved one
- Dressing your loved one in a gown or clothing provided by you and the family (subject to local regulations), and placing in the coffin or casket
- Trained colleagues to accompany visitors to pay their last respects, as requested
- Trained colleagues to assist with the examination by a doctor, as required

**Providing a suitable coffin** **from £370**

*See our full coffin selection from page 62*

**Viewing of the deceased person** **£10**

Provision of a reflection room for viewing(s) during normal working hours irrespective of the number of visit(s) made\*.

*\*Please note the reflection room is open for visitors during opening hours Monday to Friday. If you are unable to visit between these hours, a special appointment may be possible.*

**Taking the deceased person direct to the agreed cemetery or crematorium in a hearse or other appropriate vehicle** **from £625**

Normally within a 25 mile radius (50 running miles) of the funeral director's premises in a hearse or other appropriate vehicle. See page 6 for our transport selection.



# Summary price guide

This page can be used by you to record the prices of the options that you have chosen. Alternatively we can complete this page as a quotation for you. Some of our prices are set and some will vary depending on what you would like.

Standard attended funeral charges (A)	Price	Notes
Necessary legal and administrative arrangements	£795	
Collecting and transporting the deceased	£325	
Care of the deceased person	£995	
Providing a suitable coffin (from £370)	£	
Viewing of the deceased	£10	
Transport to venue in hearse or other appropriate vehicle (from £625)	£	
Subtotal A	£	
Additional charges (B)	Price	Notes
Limousine(s) @ £	£	
Additional mileage	£	
Reception into home/Church	£	
Out of hours funerals	£	
Embalming	£	
Floral tributes	£	
	£	
Floral hearse	£	
Funeral stationery	£	
Dove release	£	
Music	£	
Videography and webcasting	£	
Cremated remains casket/urn/keepsake	£	
Scattering and burial of cremated remains	£	
Removal/re-fixing a memorial	£	
Temporary grave marker	£	
Other	£	
	£	
Subtotal B	£	
Third party fees (C)	Price	Notes
Crematorium fees	£	
Doctors' fees	£	
Minister/Celebrant fee	£	
Minister travel expenses	£	
Organist's fee	£	
Verger's fee	£	
Church fee	£	
Cemetery/churchyard	£	
Gravedigger/grave preparation	£	
Newspaper notice(s)	£	
	£	
Acknowledgement notice(s)	£	
Other third party fees	£	
Subtotal C	£	
<b>Total charges (A+B+C)</b>	£	

# We're on hand in your 24/7 hour of need

When a loved one passes away, end-of-life care needs to be dependable, compassionate and ethical. With decades of experience, our trusted funeral services are available whenever you need us.

**Caring for local families  
for generations.**

[funeralcare.co.uk](https://funeralcare.co.uk)  
0800 008 6878



southern coop



THE QUEEN'S AWARDS  
FOR ENTERPRISE:  
SUSTAINABLE  
DEVELOPMENT  
2022

**Rated  
Excellent**

★ Trustpilot

southern coop

The **co-operative** funeralcare

The  
co-operative  
funeralcare

**ALTON**

71 High Street, GU34 1AB  
01420 85298

**ANDOVER**

22 London Street, SP10 2PE  
01264 334798

**ASH VALE**

231 Shawfield Road, GU12 5DL  
01252 330834

**AYLESBURY**

73 Park Street, HP20 1DN  
01296 395356

**BASINGSTOKE**

1 Buckland Parade, Buckland Avenue, RG22 6JW  
01256 351606

**BEDHAMPTON**

96 Bedhampton Road, Havant, PO9 3EZ  
02392 453549

**BISHOPS WALTHAM**

24 High Street, St George's Square, SO32 1AA  
01489 896305

**BOGNOR REGIS - NORTH BERSTED**

230 Chichester Road, PO21 5BA  
01243 865119

**BOGNOR REGIS - ROSE GREEN**

6 Nyetimber Lane, PO21 3HG  
01243 268681

**BRACKNELL**

12 Rectory Row, East Hampstead, RG12 7BN  
01344 454398

**BRIGHTON**

155 Lewes Road, BN2 3LG  
01273 626326

**CHICHESTER**

Kingsham Avenue, PO19 8AW  
01243 782209

**COWPLAIN**

37a London Road, PO8 8DF  
02392 254490

**EMSWORTH**

31 North Street, PO10 7DA  
01243 376458

**FAREHAM**

86 Trinity Street, PO16 7SJ  
01329 280249

**FARNBOROUGH**

68 Victoria Road, GU14 7PH  
01252 542236

**FELPHAM**

103-105 Felpham Way, PO22 8QB  
01243 587067

**FLEET**

287 Fleet Road, GU51 3BT  
01252 623098

**FINDON VALLEY**

202 Kings Parade, Findon Road, BN14 0EJ  
01903 877035

**FRIMLEY GREEN**

3 Wharf Road, Camberley, GU16 6LE  
01252 837506

**FROME**

1 Nunney Road, BA11 4LA  
01373 473426

**GILLINGHAM**

2 High Street, SP8 4QT  
01747 824738

**GORING-BY-SEA**

56 Goring Road, Worthing, BN12 4AD  
01903 505757

**GOSPORT - ALVERSTOKE**

147 Stoke Road, PO12 1SE  
02392 581032

**GOSPORT - ROWNER**

11 Rowner Road, PO13 9UB  
02392 502281

**HAYLING ISLAND**

20 Mengham Road, PO11 9BL  
02392 460047

**HAZLEMERE**

21 Park Parade Centre, HP15 7AA  
01494 717347

**HIGH WYCOMBE**

110 Dashwood Avenue, HP12 3EB  
01494 451292

**HOVE**

38 Blatchington Road, BN3 3YH  
01273 771332

**ISLE OF WIGHT - EAST COWES**

8-10 Ferry Road, PO32 6RA  
01983 291263

**ISLE OF WIGHT - FRESHWATER**

The Avenue, PO40 9UU  
01983 756503

**ISLE OF WIGHT - LAKE**

1 The Fairway, Sandown, PO36 9EE  
01983 403832

**ISLE OF WIGHT - NEWPORT**

61 Upper St James Street, PO30 1LQ  
01983 537213

**ISLE OF WIGHT - RYDE**

45 St John's Road, PO33 2RN  
01983 615746

**ISLE OF WIGHT - SHANKLIN**

76 Regent Street, PO37 7AP  
01983 861196

**LEIGH PARK**

194-196 Dunsbury Way, PO9 5BQ  
02392 484499

**LISS**

3 Lower Mead, Hillbrow Road, GU33 7RL  
01730 895593

**PEACEHAVEN**

217 South Coast Road, BN10 8LA  
01273 585818

**PORTSMOUTH - COPNOR**

65 Tangier Road, PO3 6JH  
02392 698362

**PORTSMOUTH - COSHAM**

47 High Street, PO6 3AX  
02392 383460

**PORTSMOUTH - EASTNEY**

131 Eastney Road, PO4 8DZ  
02392 873218

**PORTSMOUTH - FRATTON**

157 Fratton Road, PO1 5ER  
02392 863031

**PORTSMOUTH - NORTH END**

52 London Road, PO2 0LN  
02392 662534

**PORTSMOUTH - PAULSGROVE**

181 Allaway Avenue, PO6 4HG  
02392 372106

**SHAFTESBURY**

Greenacre House, Salisbury Road, SP7 8BS  
01747 858968

**SHOREHAM-BY-SEA**

68 High Street, BN43 5DB  
01273 464647

**UCKFIELD**

65 High Street, TN22 1AP  
01825 764125

**WARMINSTER**

3 George Street, BA12 8QA  
01985 220105

**WATERLOOVILLE**

320 London Road, PO7 7DU  
02392 266105

**WENDOVER**

3 Holly Court, Tring Road, HP22 6PE  
01296 696224

**WHITCHURCH**

3 Winchester Street, RG28 7AH  
01256 895914

**WIDLEY**

1 Cornwall Buildings, London Road, PO7 5AB  
02392 378472

Our partner funeral homes:

**CAMBERLEY & DISTRICT**

337 Yorktown Road, College Town, GU47 0QA  
01276 33241

**HINTON PARK**

Wyndham Rd, Hinton, Christchurch, BH23 7EJ  
01425 278910

**HOWE & SON**

Bear Hill, Kingsclere, Newbury, RG20 5QA  
01635 298303

**JB HALL**

142 Finchampstead Road, Wokingham, RG41 2NU  
01189 793623

**J EDWARDS & SON**

13 St Georges Walk, Waterlooville, PO7 7TU  
02392 262194

**LINES BANNISTER**

69 High Street, Ascot, SL5 7HP  
01344 620266

**POOLE & WIMBORNE**

Greenhill Road, Wimborne, BH21 2RG  
01202 888887